

## Mobile & Hand-held Fiber Laser Marker

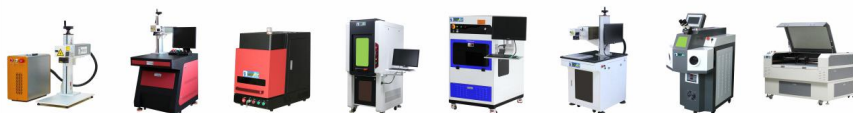
—MY-M30F



WISELY LASER



>> WWW.WISELY.HK



- ★ 2D/3D Laser Marker
- ★ CO2 Laser Engraver/Cutter
- ★ Laser Welder
- ★ Laser Automation

## Fiber Laser Marking Machine

### Feature

- 1) Open worktable, easy to feed and unload the material, can work with customized automatic matching system.
- 2) The Mobile and Handle-held Design makes the machine work indoors and outdoors, the operator can mark big, heavy or standing object easily.  
Just put the ring on the marking object, then press the button "Start" to fire the laser, the ring helps the operator find the focal length before marking.
- 3) Equipped with the Integrated computer, touch screen, software preinstalled, looks smart and save electricity power.
- 3) Adopt reliable brand JPT fiber laser source (Long lifespan: 100- 200k hours), superior laser beam, stable performance and high reliability.
- 4) Low consumption: <400W, more economical and environmental.
- 5) High Speed: 7000mm/s, high-precision and high-speed scan head, with good seal, capable to prevent dust and water, small volume, compact.
- 6) Superior Laser Beam: The definition is 1 micron, 10 times as traditional products.
- 7) No Consumables: One marker can work for more 8-10 years without any consumable.
- 8) No alighment: The fiber laser beam comes out from the fiber laser source directly, no need to adjust the laser beam path.
- 9) High-stability controller, USB interface, swift and stable transmission, route optimization, easy operation.
- 10) Strong Compatibility: PLT, BMP, JPG, TTF, DXF, SHX, AI and other format files output from CorelDraw, AI, PS, AutoCAD, Solidworks etc..

### Application

WISELY Laser Marking Machine can work with most metallic material and some non-metallic material, such as Stainless Steel, Brass, Aluminium, Steel, Iron, ABS, Nylon, PES, PVC, Makrolon, etc.

- 1) Electronic components: Resistors, Capacitors, Chips, Printed Circuit Boards, Computer Keyboard, etc.
- 2) Mechanical Parts: Bearings, Gears, Standard Parts, Motor, etc.
- 3) Instrument: Panel Board, Nameplates, Precision equipment, etc.
- 4) Hardware Tools: Knives, Tools, Measuring Tools, Cutting Tools, etc.
- 5) Automobile Parts: Pistons and Rings, Gears, Shafts, Bearings, Clutch, Lights, etc.
- 6) Daily Necessities: Handicrafts, Zipper, Key Holder, Sanitary Ware, etc.

### Parameter

Model	MY-M30F
Power	30W (20/50/60/80/100/120W laser power for optional choice)
Laser Wavelength	1064nm
Standard Marking Area	150mm*150mm
Optional Marking Area	70*70mm / 100*100mm / 200*200mm / 300*300mm / 400*400mm
Marking Depth	≤1mm
Marking Speed	7000mm/s
Minimum Line Width	0.015mm
Repeated Precision	±0.003mm
Fiber Laser Source	JPT from China (IPG for optional choice)
Scan Head	WISELY SCAN from China
Controller (software)	JZC Controller & EzCAD2 Software from China
Lifespan of Fiber Laser Module	100,000-200,000 hours
Beam Quality	M2 <1.5
Focus Spot Diameter	<0.01mm
Output Power of Laser	Continuously adjusted 10%~100%
Pulse Repetition Rate Range	Continuously adjusted 1-600KHz
System Operation Environment	Windows XP / 7 / 8 / 10 -32/64bits
Cooling Mode	Air cooling
Temperature of Operation	0-45℃
Voltage	220V / 50HZ / 1-PH or 110V / 60HZ / 1-PH
Power Requirement	<450W
Dimension (L*W*H)	80*80*166cm
Package Size	68*95*185cm
Net Weight	80kg
Gross Weight	150 kg
Optional (Not free of charge)	Rotary Device, Moving Table, Lens, Fume Purifier, other customized Automatic Matching System

### Shipment

Within 3~10 working days after receiving your payment.

### Warranty

Whole machine has a warranty period of 24 months since the production date.

### Training







1~3 working-days training free of charge in factory. Oversea training is available, the buyer can discuss the details with WISELY salesman.



## Advantages

- 1) Open worktable, easy to feed and unload the material, can work with customized automatic matching system.
- 2) The Mobile and Handle-held Design makes the machine work indoors and outdoors, the operator can mark big, heavy or standing object easily.
- 3) The machine can work with most metallic materials, such as gold, silver, copper, stainless, aluminum, ect; and some non-metallic materials.

## Main Configurations

	<b>1. JPT LP series fiber laser source</b> JPT LP series pulsed fiber lasers make use of master oscillator power amplifier (MOPA) configuration and show excellent laser performance as well as high level of temporal pulse shaping controllability.		<b>4. Taiwan MW Laser Power Supply</b> Famous Taiwan MeanWell laser power supply with Voltage Stabilizing Protection. Stable performance and long lifespan.
	<b>2. Control System &amp; Software</b> Genuine BJJCZ controller, with stable performance and high reliability. EZCAD is easy to operate, with high compatibility, support various files with format such as PLT, BMP, JPG, DXF, AI, ect.		<b>5. WISELY F-theta Lens</b> Customized by top brand Wavelength. Small-size focus spot, excellent marking effect, low consumption and high stability.
	<b>3. WISELY Scan Head</b> Customized scanner specially for High series laser marking application, its speed up to 7,000 mm/s, with high precision, low temperature drift and high stability.  We made a ring for focusing, the operator just puts the bottom of the ring onto the marking object, then press the button "Start" to fire the laser, the laser will fire at the right focal length.		<b>6. Industry computer with touch screen</b> Integrated computer, touch screen, software preinstalled, looks smart and save electricity power.  Support USB, VGA, HDMI, COM interface.

## Sample Gallery



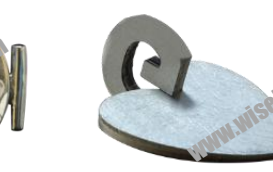
Watch Case

Stainless Black Marking & QR Code



Automobile Parts

Bearing & Gearing & Automobile Sign



Jewelry Engraving & Cutting

Silver Ring & Gold Bracelet



Photos Marking

304# DUMB-face S.S. & Plated S.S.



Copper & Stainless Deep Engraving

Silver & Aluminum Deep Engraving & Cutting

Hardware Tool Marking



Copper & Brass Marking

Medals Marking

E-cigarette Case



Nameplate Marking

Daily Necessities

Pen & Cups & Bottle

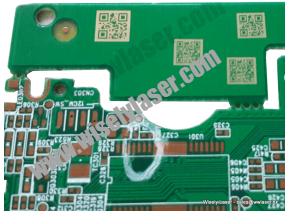


Firearms Marking & Engraving

Stainless & Carbon Steel & Chrome Steel & PMAG Polymer

### Metallic Materials

Gold  
Silver  
Brass  
Copper  
Iron  
Aluminum  
Anodized aluminum  
Stainless Steel  
Stainless Chrome  
Titanium  
Chrome  
Chrome steel  
Molybdenum  
Machine tool steel  
Multi-Coated Metal  
Nickel-plated steel  
Nickel-plated brass  
Silicon steel  
Zinc plated mild steel  
Aluminum Alloy  
Galvanized Sheet  
Alloy steel  
And more



Electronic Components



Resistors & Capacitors & Chips



### Non-metallic Materials

ABS( Black / White)  
Acrylic (black)  
Plastic  
PVC  
PE  
PEEK (white)  
Carbon fiber  
Ceramics  
Malrolon  
Nylon  
Leather  
Rubber  
Wood ( Paintted)  
And more



Computer Keyboard



Mouse Marking



Computer



Painted Plastic Transparent Marking



Painted Glass Marking



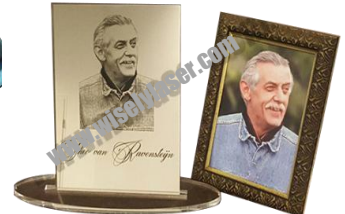
Painted Acrylic



Toner Cartridge & Cam



Mirror artwork



Animal Eartag & Plastic Seal



Power Bank & Adapter



LED Lighting






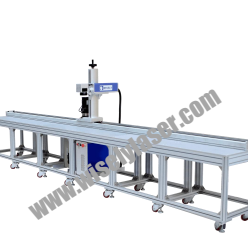




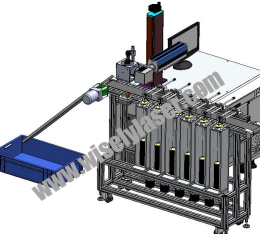
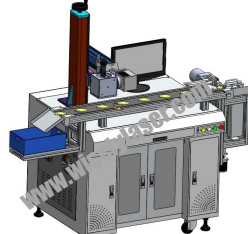
Ceramics Marking



Artificial Leather



## Automation For Fiber Laser Marking Machine

	<b>1. Conveyor For Bearing Marking System</b>  The machine is equipped with a set of conveyor, the transmission speed can be adjusted easily, and the cylinder position can be adjusted according to the product.		<b>6. Double Conveyors Bearing Marking System</b>  This machine is equipped with two sets of conveyors, designed to massive bearings marking or similar objects marking. The two conveyors can do dual marking, alternately feeding and unloading, good for improving the processing efficiency.
	<b>2. Auto 1D Moving Table</b>  There are two work stations, and one fixture can be placed on each work station. The stations alternately operate to complete repetitive action as loading, marking, moving, unloading, can expend working area, save time and reduce labor cost.		<b>7. Ruler Marking System</b>  This 4000mm long automation is special for the aluminum, brass, stainless ruler marking, used for oil companies and gas station. It is also good for other long-size products marking.
	<b>3. Auto Feeding System</b>  The machine is equipped with PLC controller, motor driving system and linear guide rail transmission system. The robotic arm automates feeding & unloading, suitable for nameplate of electronics, food, beverages, small gift and so on.		<b>8. Auto Focus System</b>  This auto-focus makes it easy to achieve auto-focusing on the different thicknesses of materials, which is a perfect alternative to manual focusing, the sensor has the characteristics of high sensing precision, accurate testing distance, fast feedback.
	<b>4. Rotary For Lamp &amp; LED</b>  The rotation table is equipped with high precision DD Motor, designed for marking LED light or similar object. 8 working pistons, integrates marking and testing, are conducive to high efficiency of the production line.		<b>9. Pen Marking System</b>  The rotation is equipped with multiple groove, suitable for pen, similar cylinders marking. It's good for high-efficiency marking, time-saving and lower cost.
	<b>5. Medal Auto Feeding Marking System</b>  6-piston automation with CCD camera, good for medals batch marking. The automation is equipped with PLC, control software and stepper driving system. can improve marking efficiency, reduce labor cost.		<b>10. Medal Auto Feeding Marking system</b>  1-piston automation with CCD camera, good for medals batch marking. The automation is equipped with PLC, control software and stepper driving system. can improve marking efficiency, reduce labor cost.

Welcome to consult for more automatic laser machine systems.....

[www.wiselylaser.com](http://www.wiselylaser.com)